

pB10A Startup Procedure

Install GUI from CD to PC. (If emailed file; may have to rename file extension <name>.zip)

Copy <name>.zip file to a temporary directory, then expand the file. Open the SETUP.EXE file and follow the command prompts until install is complete. There should be a pocketBERT icon on the desktop.

Connect power supply and USB cable to the pB10A unit.

Start GUI from your PC by selecting the pocketBERT icon, following screen should appear and circled settings must be checked (selected).

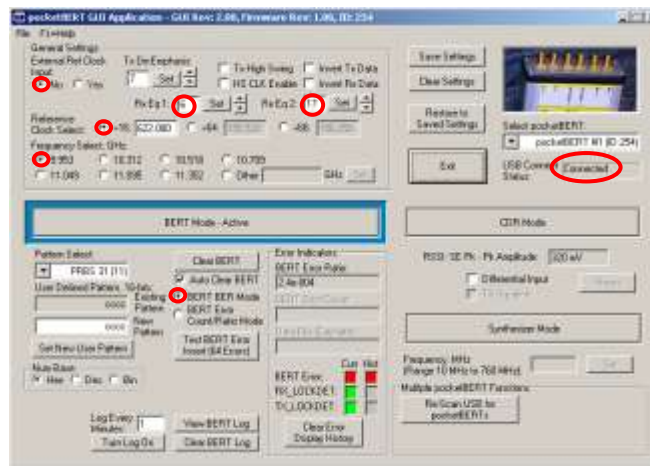


Figure 1: startup settings

Out of the box we recommend to run a quick check to verify proper operation:

- connect TxN and RxN or TxP and RxP with an SMA cable (hand tight is fine).
- The unconnected Rx_ input should be terminated with a 50 Ohm SMA termination.
- click “BERT Mode”



Figure 2: Initialization

- select BER Error Count/Ratio Mode
- Click “Clear BERT” and “Clear Error Display History” and your BER test should run error free. Data Bits counter will start counting.
- If you can’t see error free operation at higher frequencies check the transmit de-emphasis box.

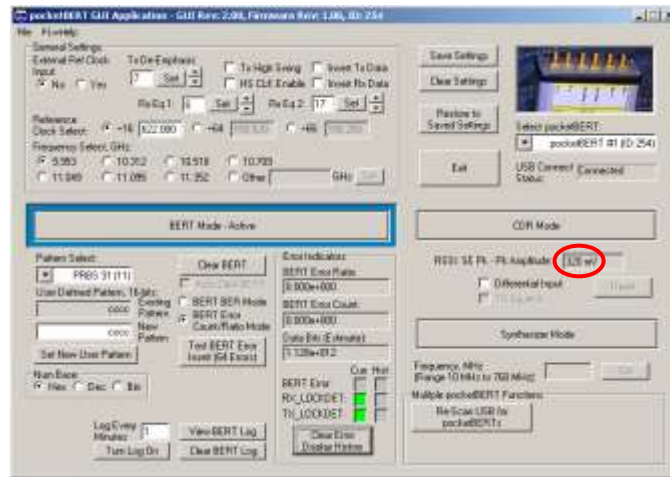


Figure 3: Error free test operation

- The RSSI meter should show a P_k - P_k single ended input level of about 310 mV when “Differential Input” is not selected as shown. When a differential signal is provided and the “Differential Input” check box is selected, the RSSI will show the single ended input level as measured from the differential input.
- inject errors by clicking “Test BERT Error Insert (64 Errors)”

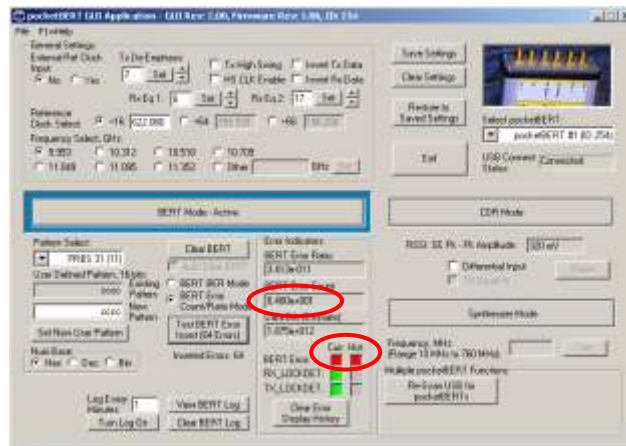


Figure 4: 64 errors injected

- The BERT Error Curr and Hist have turned red and 64 errors should appear in the “BERT Error Count” box. If errors do not appear in the “BERT Error Count” box, Click “Clear BERT” again and then re-try the inject errors test again.

*****Always be gentle with SMA connectors – hand tight is fine for most applications – don’t over torque *****
***** Work in an ESD safe work environment *****

For further questions please don’t hesitate to contact us at support@pocketbert.com